

INLAND EMPIRE COMMUNITY RESOURCES

24-HOUR/7 DAYS PER WEEK CRISIS HOTLINE AND CRISIS SERVICES:



Adapt Integrated Health: 541-440-3532
or 800-866-9780
National Suicide Hotline: 800-273-8255;
800-799-4889 (TTY)
Peace at Home: 800-464-65431202

BEHAVIORAL HEALTH SUPPORTS FOR PARENTS AND CHILDREN:

Walk-In Mental Health Clinic

- San Bernardino: 909-387-7200
- Se Habla Espanol

LLU Resiliency Clinic

- Loma Linda: 909-558-6716
- Low-Cost/Free

LLU Behavioral Health Institute

- Redlands
- 909-558-9552
- 909-558-9275
- Out patient and in patient services

County Mental Health for Medical

- Riverside - Phone: 800-706-7500
- San Bernardino - Phone: 888-743-1478
- Medical Accepted

Healthy Kids

- Riverside: 800-706-7500
- San Bernardino: 800-440-4347
- IEHP Accepted



DEVELOPMENTAL SERVICES



For access to developmental services,
please contact the Inland Regional
Center
Location: 1365 S Waterman Ave, San
Bernardino, CA 92408
Phone: 909-890-3000

FOOD PANTRIES

Loma Linda 7th Day Adventist Church

- Location: 26271 Mayberry St. Loma Linda
- Phone: 909-796-0881

HTC Charity (Fontana)

- Location: 17244 Randall Avenue
- 909-350-4236

Food Pantries Community Action Partnerhips of SB County

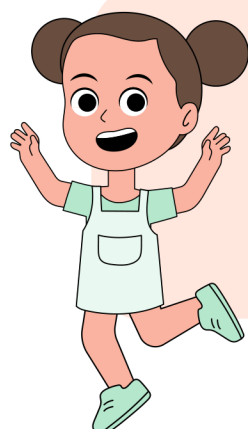
- Location: 696 S Tippecanoe Ave. San Bernardino
- Phone: 909-723-1500



Visit the link below for more information:
<https://helpinghandspantry.org/need-help/>



ADDITIONAL RESOURCES



SACHS Community Resource Center
Provides many resources for families
Please visit:
<https://www.sachealth.org/community-resource-center/> for more details