

INLAND EMPIRE COMMUNITY RESOURCES

24-HOUR/7 DAYS PER WEEK CRISIS HOTLINE AND CRISIS SERVICES:



Adapt Integrated Health: 541-440-3532
or 800-866-9780
National Suicide Hotline: 800-273-8255;
800-799-4889 (TTY)
Peace at Home: 800-464-65431202

BEHAVIORAL HEALTH SUPPORTS FOR PARENTS AND CHILDREN:

Walk-In Mental Health Clinic

- San Bernardino: 909-387-7200
- Se Habla Espanol

LLU Resiliency Clinic

- Loma Linda: 909-558-6716
- Low-Cost/Free

LLU Behavioral Health Institute

- Redlands
- 909-558-9552
- 909-558-9275
- Out patient and in patient services

County Mental Health for Medical

- Riverside - Phone: 800-706-7500
- San Bernardino - Phone: 888-743-1478
- Medical Accepted

Healthy Kids

- Riverside: 800-706-7500
- San Bernardino: 800-440-4347
- IEHP Accepted



DEVELOPMENTAL SERVICES



For access to developmental services,
please contact the Inland Regional
Center

Location: 1365 S Waterman Ave, San
Bernardino, CA 92408
Phone #: 909-890-3000

FOOD PANTRIES

Loma Linda 7th Day Adventist Church

- Location: 26271 Mayberry St. Loma Linda
- Phone #: 909-796-0881

HTC Charity (Fontana)

- Location: 17244 Randall Avenue
- Phone #: 909-350-4236

Food Pantries Community Action Partnerhips of SB County.

- Location: 696 S Tippecanoe Ave. San Bernardino
- Phone #: 909-723-1500



Visit the link below for more information:
<https://helpinghandspantry.org/need-help/>



HOUSING RESOURCES

Our HouseFamily Assistance Program

Access to emergency shelters for youth at risk

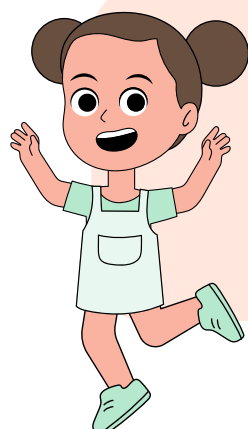
Phone #: 909-335-2676

Hotline: 760-949-4357

Low Cost Internet

Internet Essentials -- Comcast

Phone #: 855-846-8376



INLAND EMPIRE COMMUNITY RESOURCES

DENTIST RESOURCES IN THE INLAND EMPIRE



Chino Valley Pediatric Dentistry, Dr. Johnny Ma
13768 Roswell Avenue, Suite 221, Chino
(909) 548-6828 - <http://www.909kids.com/>
Dr. Brian Hong, DDS
100 E Valencia Mesa Drive Suite 102, Fullerton
(714) 992-5437 - <http://fullertonpediatricdentists.com/>
Loma Linda University Pediatric School of Dentistry, Early
Childhood Special Care Dental Program
24876 Taylor Street #203, Loma Linda, California 92354
(909) 558-7025
Provides a variety of dental services and specialties at low
cost for all ages.

ADDITIONAL DENTIST RESOURCES

IRC has a certified dental coordinator, René Zambel, RDHAP on staff. You will need to contact your caseworker and request a referral for dental coordinator services. The dental coordinator can also come out to the home to help desensitize.

For more dentists near you check out this website:
<https://ieautism.org/dentists-and-dental-care-2/>



MENTAL HEALTH

Family Service Agency of San Bernardino
Clinic location: 1661 N. E St. San Bernardino, CA 92405
Phone #: 909-886-6737

South Coast Community Services -- Yucaipa
Offers therapy, support groups, & educational presentations

Location: 34324 Yucaipa Blvd. Suite B-D, Yucaipa, CA 92399
Phone #: 909-790-1300



PARENTING

Child Care Resource Center
Apply for child care and financial assistance
Location: 1111 E. Mill St. #100 San Bernardino, CA 92408
Phone #: 909-384-8000

Walden Family Services
Multiple locations & Spanish available
Phone #: 909-264-6742



ADDITIONAL RESOURCES

SACHS Community Resource Center
Provides many resources for families
Please visit:

<https://www.sachealth.org/community-resource-center/> for more details

